

## Appendix 2

### November 2011 Figures

All figures contained in this report come from the Connexions database. The figures are for all young people who are resident in Leeds.

All the figures in this dataset are for young people, who are in academic Years 12-14, so includes young people age 16-19.

**In previous years the measure of NEET and Not Known used was different. The measure of young people in education was based on the location of the educational institution rather than the residency of the young person. The age was those over statutory school age and under 19, so young people left the cohort on their 19<sup>th</sup> birthday. This means that accurate comparison of NEET figures with previous years is not possible.**

Headline figures for November 2011 are:-

**Adjusted NEET: 8.1% (1926 young people)**

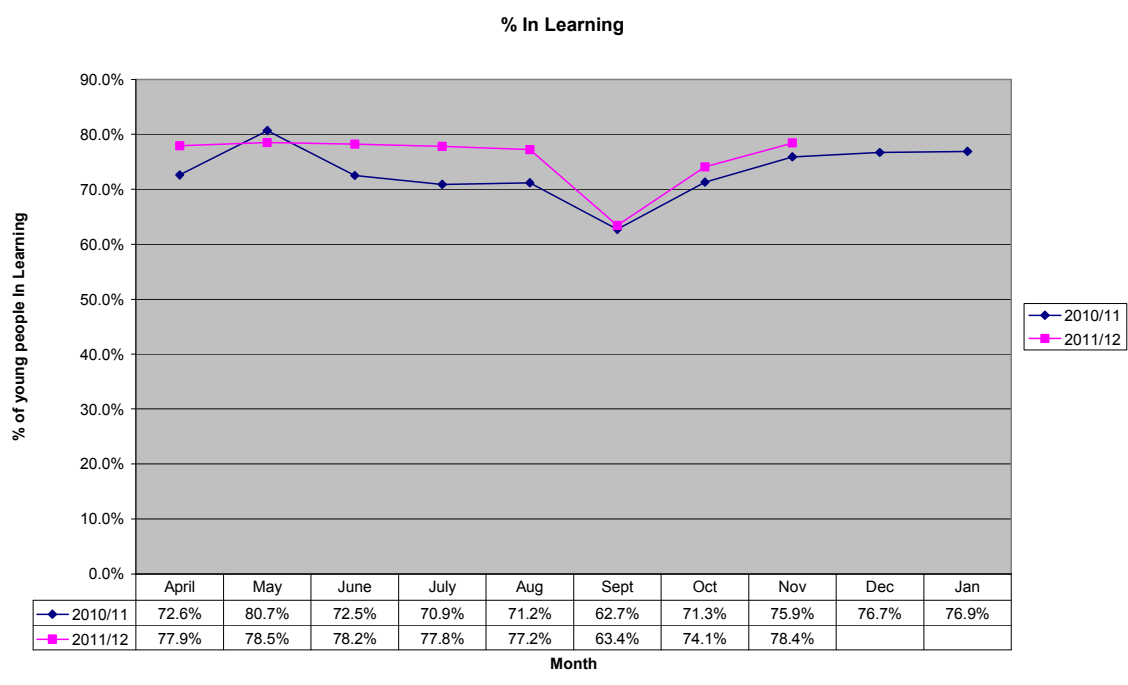
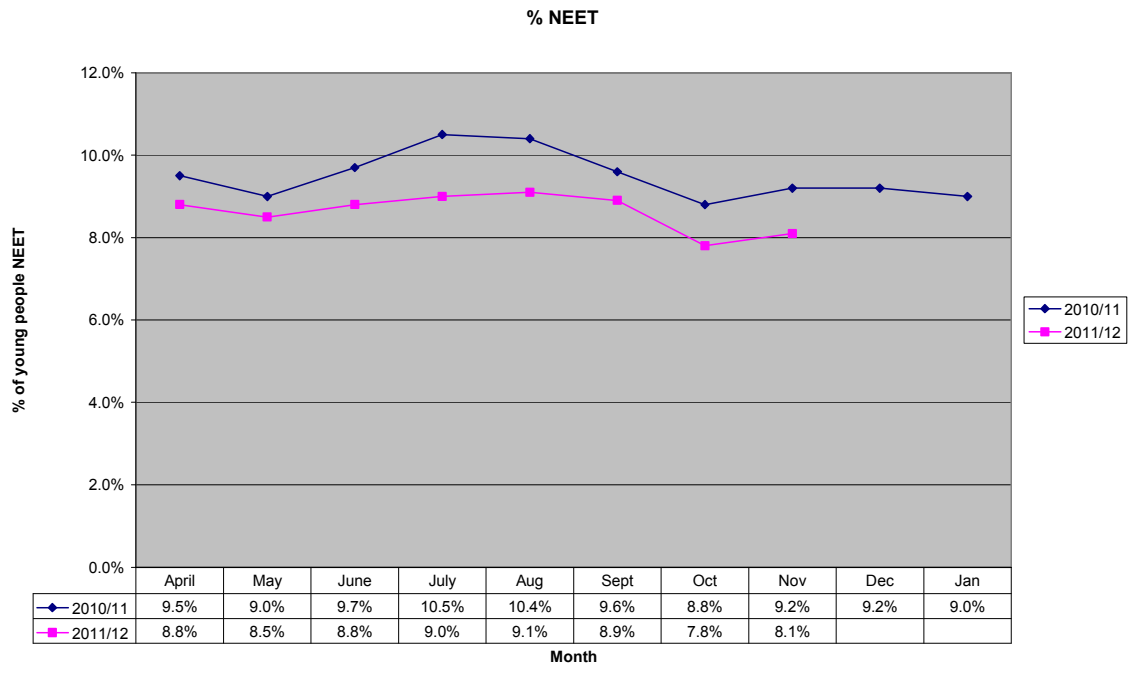
**Not Known: 11.4% (2770 young people)**

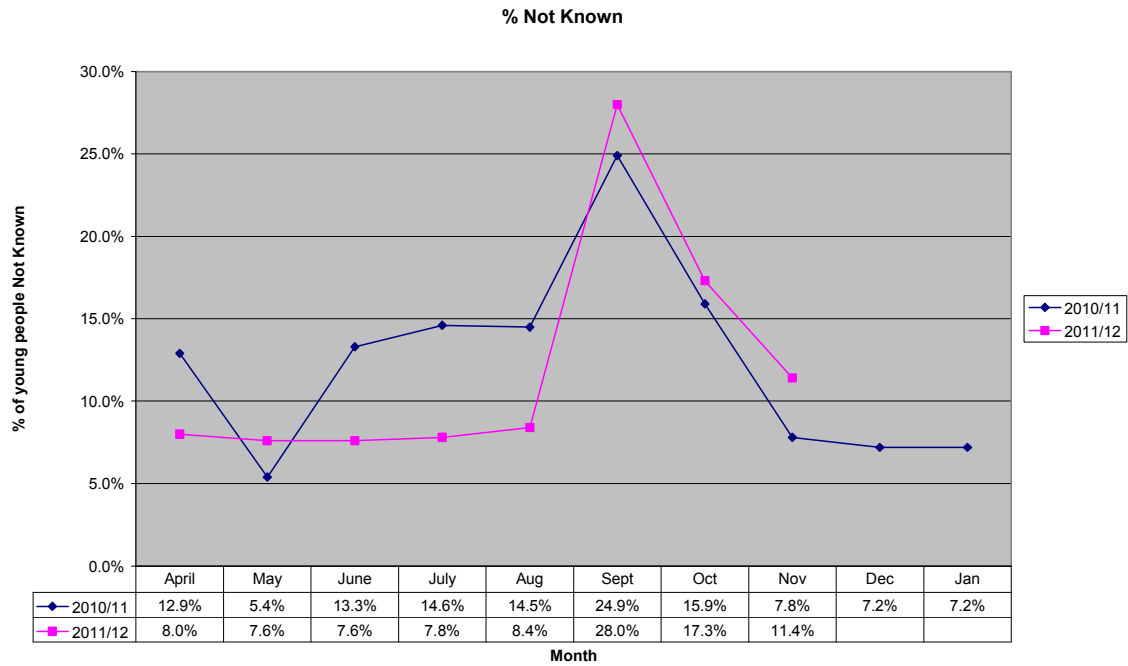
**In Learning: 78.4% (19045 young people)**

The adjusted NEET figure takes account of the number of young people whose status is Not Known. A formula is applied so that **some** young people whose status is Not Known are assumed to be NEET. This is added to the NEET figure to give the adjusted NEET figure.

Young people are classed as Not Known if they have not had contact with the Connexions service within a certain period, how regular the contact needs to be depends on whether the young person is NEET or EET. The Not Known figure, therefore, includes young people who may be in contact with other services but whose record has not been updated on the Connexions database.

DfE have produced approximate figures for 2010/11, using the reporting requirement for 2011/12. This can be used as a baseline for comparison.





The level of NEET this year is below last year, when a significant reduction was achieved. Work is ongoing to bring the number of young people NEET down further.

The level of Not Known is higher than for the previous November.

## Comparison with other Local Authorities

### Statistical Neighbours

<i>Select Local Authority</i>	Academic Age16-18 (Y12-Y14) NEET %	Y12 NEET %	Y13 NEET %	Y14 NEET %	Academic Age 16 - 18 (Y12-Y14) NK %	Y12 NK%	Y13 NK%	Y14 NK%	Academic Age 16 - 18 (Y12-14) In Learning %	Y12 In Learning %	Y13 In Learning %	Y14 In Learning %
<b>Leeds</b>	8.1%	5.4%	8.3%	10.6%	11.4%	1.4%	6.5%	25.4%	78.4%	91.4%	83.8%	61.1%
Mean indicator for statistical neighbours	8.1%	4.9%	7.7%	11.9%	6.9%	1.2%	5.7%	13.7%	80.0%	92.2%	83.6%	64.8%

Name	Academic Age16-18 (Y12-Y14) NEET %	Y12 NEET %	Y13 NEET %	Y14 NEET %	Academic Age 16 - 18 (Y12-Y14) NK %	Y12 NK%	Y13 NK%	Y14 NK%	Academic Age 16 - 18 (Y12-14) In Learning %	Y12 In Learning %	Y13 In Learning %	Y14 In Learning %
Sheffield	8.3%	5.2%	8.2%	11.5%	9.7%	1.3%	9.2%	18.1%	77.9%	92.2%	80.9%	61.5%
Bolton	7.3%	4.1%	7.5%	11.3%	17.4%	2.0%	18.9%	30.6%	73.1%	92.8%	72.6%	54.6%
Stockton-on-Tees	10.5%	6.0%	9.8%	15.3%	6.9%	1.5%	6.2%	12.6%	78.0%	91.3%	81.3%	62.8%
Darlington	11.5%	6.6%	11.9%	15.9%	4.8%	1.6%	4.5%	8.3%	76.4%	90.1%	79.7%	60.4%
Calderdale	6.6%	4.7%	6.1%	9.2%	5.3%	1.1%	2.3%	12.4%	84.0%	92.0%	88.0%	72.4%
St. Helens	8.6%	4.3%	7.0%	14.4%	2.2%	0.4%	2.0%	4.1%	83.0%	94.1%	86.6%	68.9%
Derby	8.4%	4.5%	8.7%	12.3%	9.9%	1.6%	6.2%	21.4%	76.6%	91.2%	81.4%	57.8%
Kirklees	7.7%	4.7%	7.5%	11.1%	6.0%	0.6%	4.0%	13.2%	82.5%	92.6%	85.8%	69.6%
North Tyneside	6.3%	4.4%	5.8%	8.6%	4.4%	0.7%	1.5%	10.6%	86.3%	93.8%	90.7%	75.3%
Milton Keynes	5.8%	4.2%	4.5%	8.8%	2.9%	0.8%	2.6%	5.3%	82.2%	92.1%	88.7%	65.3%

## Yorkshire & Humber

Gaps in the data are due to gaps in information received from DfE.

	Not known		In learning		16-18 year olds NEET	
	% Academic Age16-18s NK	% change over last 12 months	% Academic Age16-18s in learning	% change over last 12 months	% Academic Age16-18s NEET	% change over last 12 months
<b>ENGLAND</b>	<b>11.2%</b>	<b>51.4%</b>	<b>78.2%</b>	<b>1.0%</b>	<b>6.3%</b>	<b>-7.4%</b>
<b>YORKS &amp; THE HUMBER</b>	<b>7.8%</b>	<b>20.0%</b>	<b>81.0%</b>	<b>4.5%</b>	<b>7.2%</b>	<b>-8.9%</b>
Barnsley	8.3%	23.9%	80.5%	1.2%	6.4%	12.3%
Bradford	4.2%	-26.3%	85.6%	6.6%	7.0%	-11.4%
Calderdale	5.3%	-15.9%	84.0%	5.0%	6.6%	
Doncaster	3.5%	-23.9%	80.9%	4.2%	6.8%	-8.1%
East Riding						
Kingston upon Hull	15.5%	72.2%	75.8%	4.5%	10.1%	-17.9%
Kirklees	6.0%	-25.9%	82.5%	7.4%	7.7%	-15.4%
Leeds	11.4%	46.2%	78.4%	3.3%	8.1%	-12.0%
North East Lincolnshire	2.3%	15.0%	85.8%	7.8%	5.7%	-34.5%
North Lincolnshire	10.2%	5.2%	81.0%	7.9%	6.5%	-22.6%
North Yorkshire	10.5%	275.0%	81.1%	-1.0%	4.8%	9.1%
Rotherham	5.0%	-9.1%	81.3%	3.7%	7.7%	-4.9%
Sheffield	9.7%	-2.0%	77.9%	7.7%	8.3%	-16.2%
Wakefield	7.0%	-1.4%	78.6%	5.6%	7.7%	-8.3%
York	3.1%	-26.2%	86.1%	9.3%	5.7%	3.6%

## Core Cities

	Not known		In learning		16-18 year olds NEET	
	% Academic Age16-18s NK	% change over last 12 months	% Academic Age16-18s in learning	% change over last 12 months	% Academic Age16-18s NEET	% change over last 12 months
<b>Birmingham</b>	8.0%	15.9%	81.6%	2.4%	7.0%	-15.7%
<b>Bristol</b>	9.2%	53.3%	77.2%	4.4%	9.1%	7.1%
<b>Leeds</b>	11.4%	46.2%	78.4%	3.3%	8.1%	-12.0%
<b>Liverpool</b>	6.0%	57.9%	78.7%	-2.3%	11.7%	31.5%
<b>Manchester</b>	2.7%	-25.0%	86.4%	5.8%	6.8%	-13.9%
<b>Newcastle</b>	8.4%	-15.2%	77.8%	1.6%	12.3%	11.8%
<b>Nottingham</b>	5.4%	-40.0%	85.7%	8.6%	5.5%	-25.7%
<b>Sheffield</b>	9.7%	-2.0%	77.9%	7.7%	8.3%	-16.2%

## NEET and Not Known Breakdown

### Type of NEET and Not Known

The subcategories used for recording status on the Connexions database give the following information about young people in Leeds. The rows in blue give the totals for the subgroups, which are underneath in green. The categories used are national recording categories from the DfE.

Currency Expired is a term used when the status of a young person has not been updated or confirmed within a given timeframe. Part of national Connexions recording rules are requirements to verify a young person's status within a given period of time to ensure records are up to date.

The adjusted NEET figure recorded for Leeds is larger than the figure shown below because the adjusted NEET figure takes account of the number of young people whose status is Not Known. A formula is applied so that **some** young people whose status is Not Known are assumed to be NEET. This is added to the NEET figure to give the adjusted NEET figure.

	Yr 12	Yr 13	Yr 14	Yr 12-Yr 14 Total
<b>Cohort total</b>	<b>7691</b>	<b>8226</b>	<b>8377</b>	<b>24294</b>
<b>EET Total</b>	<b>7165</b>	<b>7069</b>	<b>5632</b>	<b>19866</b>
<b>In education, post Year 11</b>	<b>6602</b>	<b>6284</b>	<b>4475</b>	<b>17361</b>
School Sixth Form	3267	3271	599	<b>7137</b>
Sixth Form College	680	635	180	<b>1495</b>
Further Education	2611	2353	1921	<b>6885</b>
Higher Education	0	6	1735	<b>1741</b>
Part time Education	12	8	17	<b>37</b>
Gap Year students	0	0	21	<b>21</b>
Other Post 16 Education	32	11	2	<b>45</b>
<b>Employment</b>	<b>380</b>	<b>486</b>	<b>984</b>	<b>1850</b>
Apprenticeship	78	126	183	<b>387</b>
Employment with training to NVQ 2 or above	166	186	311	<b>663</b>
Employment without training to NVQ 2	55	64	188	<b>307</b>
Employment with locally recognised training	52	75	221	<b>348</b>
Temporary employment	6	5	12	<b>23</b>
Part Time Employment	23	30	69	<b>122</b>
<b>Training</b>	<b>183</b>	<b>299</b>	<b>173</b>	<b>655</b>
YPLA funded training	132	240	125	<b>497</b>
Other training (eg, LA, VCS or ESF provision)	51	58	38	<b>147</b>
Training delivered through the Work Programme	0	1	10	<b>11</b>
<b>NEET Group</b>	<b>404</b>	<b>593</b>	<b>602</b>	<b>1599</b>
<b>Available to labour market</b>	<b>359</b>	<b>491</b>	<b>496</b>	<b>1346</b>
Waged Personal Development Opportunities	1	1	1	<b>3</b>
Other Personal Development Opportunities	5	8	7	<b>20</b>
Full Time Voluntary Work	0	0	0	<b>0</b>
Not yet ready for work or learning	23	17	20	<b>60</b>

Start Date agreed	46	46	15	<b>107</b>
Seeking employment, education or training	284	419	453	<b>1156</b>
<b>Not available to labour market</b>	<b>45</b>	<b>102</b>	<b>106</b>	<b>253</b>
Young carers	1	2	2	<b>5</b>
Teenage parents	17	53	61	<b>131</b>
Illness	13	19	26	<b>58</b>
Pregnancy	9	18	10	<b>37</b>
Religious grounds	1	0	0	<b>1</b>
Unlikely to be economically active	0	1	1	<b>2</b>
Other reason	4	9	6	<b>19</b>
<b>Other (not EET or NEET)</b>	<b>14</b>	<b>29</b>	<b>16</b>	<b>59</b>
Custody	14	29	16	<b>59</b>
Refugees/Asylum seekers	0	0	0	<b>0</b>
<b>Current situation not known</b>	<b>108</b>	<b>535</b>	<b>2127</b>	<b>2770</b>
Current situation not known	78	30	26	<b>134</b>
Cannot Be Contacted	19	91	271	<b>381</b>
Refused to disclose activity	2	7	46	<b>55</b>
Currency Expired - EET	2	325	1560	<b>1887</b>
Currency Expired - NEET	6	81	217	<b>304</b>
Currency Expired - Other	1	1	7	<b>9</b>

More detailed breakdown of the NEET data will be made available to partners on a yearly basis, in March. This will include figures by ethnicity, gender and for identified vulnerable groups.

## NEET Joiners and Leavers

Information from the returns made to DfE shows the number of young people entering the NEET cohort from different status groups and the destinations of young people leaving the NEET cohort. The numbers from April 2011 – November 2011 are:

	Total number of NEET Joiners	Joining From									
		Education	%	Employment	%	Training	%	Status established from Not Known	%	Others	%
ENGLAND	153,461	41,032	27%	13,818	9%	15,374	10%	42,074	27%	41,163	27%
Leeds	2,762	891	32%	252	9%	365	13%	897	32%	357	13%

Others includes young people moving to the local authority from another area and young people leaving custody.

	Average no of 16-18 year olds NEET (unadjusted)	Total number of NEET Leavers	Leaving To											
			Education	%	Employment	%	Training	%	Currency expired	%	Moved Away	%	Other Reason	%
ENGLAND	92,014	135,465	24,426	18%	27,850	21%	18,063	13%	51,376	38%	7,238	5%	6,503	5%
Leeds	1,627	2,480	381	15%	388	16%	482	19%	1,026	41%	77	3%	126	5%

Currency Expired is a term used when the status of a young person has not been updated or confirmed within a given timeframe. These young people are included in the Not Known figures.

Other reasons includes young people for whom Connexions does not have up to date contact details, young people who are not willing to share information with Connexions and young people who have entered custody.



## Ward

If a young person's address is unknown it is recorded as the Connexions Centre. This means the large number of young people in the city centre does not reflect the number of young people who actually live in the city centre.

Errors in the recording of postcode on the Connexions database mean there are a number of young people who can not be matched to a ward. For this reason these figures should be viewed as indicative

Ward	Ward Wedge	NEET		Not Known		Total number of young people
		Count	%	Count	%	
No Postcode Ward	No Wedge	5	9.62%	3	5.77%	52
Adel and Wharfedale	West North West	17	3.00%	43	7.58%	567
Alwoodley	East North East	25	3.71%	48	7.13%	673
Ardsley and Robin Hood	South East	29	3.75%	64	8.27%	774
Armley	West North West	79	9.15%	114	13.21%	863
Beeston and Holbeck	South East	75	9.25%	100	12.33%	811
Bramley and Stanningley	West North West	86	10.34%	100	12.02%	832
Burmantofts and Richmond	East North East	99	11.66%	91	10.72%	849
Calverley and Farsley	West North West	19	2.78%	61	8.93%	683
Chapel Allerton	East North East	64	7.03%	65	7.14%	910
City and Hunslet	South East	104	11.32%	221	24.05%	919
Crossgates and Whinmoor	South East	44	5.45%	71	8.79%	808
Farnley and Wortley	West North West	82	8.94%	103	11.23%	917
Garforth and Swillington	South East	23	2.96%	61	7.86%	776
Gipton and Harehills	East North East	127	10.85%	126	10.76%	1171
Guiseley and Rawdon	West North West	22	3.03%	73	10.04%	727
Harewood	East North East	9	2.03%	31	7.00%	443
Headingley	West North West	7	6.09%	6	5.22%	115
Horsforth	West North West	18	2.74%	34	5.18%	657
Hyde Park and Woodhouse	West North West	48	11.27%	33	7.75%	426
Killingbeck and Seacroft	East North East	125	11.63%	102	9.49%	1075
Kippax and Methley	South East	38	5.31%	65	9.09%	715
Kirkstall	West North West	48	8.47%	45	7.94%	567
Middleton Park	South East	120	11.31%	139	13.10%	1061
Moortown	East North East	21	2.90%	25	3.46%	723
Morley North	South East	22	3.19%	77	11.18%	689
Morley South	South East	37	5.56%	84	12.63%	665
Otley and Yeadon	West North West	27	3.68%	68	9.28%	733
Pudsey	West North West	25	3.69%	63	9.31%	677
Rothwell	South East	36	5.51%	57	8.73%	653
Roundhay	East North East	34	4.17%	31	3.80%	815
Temple Newsam	South East	44	5.12%	85	9.88%	860
Weetwood	West North West	27	4.43%	48	7.87%	610
Wetherby	East North East	6	1.20%	29	5.80%	500

## Individual Circumstances

These are the individual circumstances identified on the Connexions database as being current for that young person. These groups are not mutually exclusive, so one young person may appear in more than one of these categories.

Description	NEET		Not Known		Total number of young people
	Count	%	Count	%	
Attendance less than 20% - Female	98	25.79%	83	21.84%	380
Attendance less than 20% - Male	76	20.60%	71	19.24%	369
Care Leaver - Female	37	28.24%	9	6.87%	131
Care Leaver - Male	26	16.05%	13	8.02%	162
Client disclosed substance misuse - Female	16	32.00%	6	12.00%	50
Client disclosed substance misuse - Male	22	33.85%	5	7.69%	65
English as a 2nd Language - Female	14	6.45%	12	5.53%	217
English as a 2nd Language - Male	15	5.75%	16	6.13%	261
Looked after/in care - Female	41	25.47%	7	4.35%	161
Looked after/in care - Male	28	13.53%	12	5.80%	207
No fixed abode - Homeless - Female	10	26.32%	7	18.42%	38
No fixed abode - Homeless - Male	5	16.67%	6	20.00%	30
Parent that is caring for own child - Female	128	45.88%	51	18.28%	279
Parent that is caring for own child - Male	8	42.11%	3	15.79%	19
Parent that is not caring for own child - Female	4	28.57%	4	28.57%	14
Parent that is not caring for own child - Male	14	53.85%	7	26.92%	26
Pregnant - Female	73	42.44%	15	8.72%	172
Pregnant - Male	0	0.00%	1	100.00%	1
Refugee/asylum seeker - Female	1	5.88%	2	11.76%	17
Refugee/asylum seeker - Male	3	6.67%	7	15.56%	45
Refugee/asylum seeker - not known	1	100.00%	0	0.00%	1
Supervised by YOS - Female	18	28.13%	8	12.50%	64
Supervised by YOS - Male	68	22.59%	44	14.62%	301
Temporary Accommodation - Emergency Accommodation - Female	19	30.65%	6	9.68%	62
Temporary Accommodation - Emergency Accommodation - Male	13	32.50%	6	15.00%	40
Temporary Accommodation - Sofa Surfing - Female	47	26.11%	25	13.89%	180
Temporary Accommodation - Sofa Surfing - Male	35	30.70%	22	19.30%	114
Traveller - Female	18	26.87%	18	26.87%	67
Traveller - Male	14	27.45%	17	33.33%	51
Young Carer - Female	7	13.46%	11	21.15%	52
Young Carer - Male	8	25.00%	3	9.38%	32
Young Person Living Independently - Female	50	29.94%	22	13.17%	167
Young Person Living Independently - Male	24	30.77%	6	7.69%	78

## LDD (Learning Difficulty and/or Disability) Status

LDD	NEET		Not Known		Total number of young people
	Count	%	Count	%	
LDD not Statemented	6	9.68%	6	9.68%	62
No LDD	1230	5.90%	1606	7.70%	20846
School Action	208	12.71%	178	10.88%	1636
School Action +	171	16.68%	136	13.27%	1025
Statemented	81	10.84%	53	7.10%	747

The status of young people is identified using the following definitions:

LDD Not Statemented	A learning difficulty and / or disability has been identified by a health or education professional after the young person has completed compulsory education (post-16)
School Action	When a teacher identifies that a young person has SEN and is able to adapt teaching to meet that young persons needs.
School Action Plus	When a teacher identifies SEN and requires support from outside specialists to meet the young persons learning needs.
Statemented	This category is used for young people who have a statement of SEN. The young person will have been subject to a statutory assessment by the Local Authority involving the school, an educational psychologist and other professionals involved with the young person. The statement is reviewed during the young persons schooling. Young people in this category will receive a Section 139a assessment during their final year in school. This is carried out by a Connexions PA, with other professionals, and sets out the support needs of that young person to move into further education, training or employment. This category would be used for young people with higher levels of SEN needs.